

MISSION:

St. Teresa's Academy, a Catholic, independent, college-preparatory high school, sponsored by the Sisters of St. Joseph of Carondelet, is committed to the education of young women. The Academy, rooted in Christian values and embracing a diverse student body, promotes excellence in education through a challenging curriculum, personal responsibility, and participation in extra-curricular activities.

COMMUNITY:

The Kansas City metropolitan area has a population of nearly two million people. It is composed of Kansas City, Missouri and seven counties in both Missouri and Kansas.

ENROLLMENT:

535, Grades 9-12, approximately 12% minority students. 74% reside in MO and 26% in KS.

Class of 2009 – 132 young women

Class of 2010 – 123 young women

FACULTY:

More than 45 men and women, both lay and religious, with more than 75% having earned advanced degrees. Student-faculty ratio is 12:1.

ACCREDITATION:

North Central Commission on Accreditation and School Improvement, University of Missouri.

MEMBERSHIPS:

National Catholic Education Association, National Association of Secondary School Principals, Missouri Association of Secondary School Principals, Association for Supervision and Curriculum Development, National Association for College Admission Counseling, Missouri Association for College Admission Counseling, and Great Plains Association for Admission Counseling. Each department holds memberships in state and national associations.

POINTS OF PRIDE:

STA has two semesters with a flexible modular schedule that promotes student responsibility for scheduling of unstructured time. Our graduates enter college with considerable experience in decision making and self-direction in the use of time.

HONORS COURSES:

Algebra II, American Literature, Chemistry, Physics, and Pre-Calculus. Honors courses are noted on transcript with an asterisk (*).

AP/DUAL ENROLLMENT COURSES:

French III & IV, Latin III & IV, Spanish IV, and College Composition I and II are college credit courses taken through Rockhurst University.

Western Civilization I and II are taken through the University of Missouri-Kansas City.

French V, Spanish V, and College Physics are taken on the campus of Rockhurst University.

Students may take AP exams in related courses. AP Courses: Biology, Calculus AB, United States History, United States Government, and English Language.

GRADUATION REQUIREMENTS:

	Credits
Computer Science	1
Electives~3 credits beginning Class of 2012	4
English (Language Arts)	4
Fine Arts (Arts, Music, Drama, Speech)	1
Foreign Language	2
Mathematics~4 credits beginning Class of 2012	3
Physical Education	1
Science	3
Social Studies	3
Theology (4 years)	2
Community Service Hours	90
Total Credits	24

CLASS OF 2008

COLLEGE MATRICULATION:

The Class of 2008 had 131 graduates with 98% continuing their education. Scholarship offers were made to 79% of the class.

- 98% - 4 year colleges
- 1% - 2 year community colleges
- 57% - 4 year public colleges/universities
- 42% - 4 year private colleges/universities
- 37% - outside of Missouri and Kansas

STANDARDIZED TESTS:

ACT:

99% took the ACT

	<u>Middle 50%</u>	<u>Mean</u>
English	25-31	28
Math	21-28	25
Reading	23-20	27
Science	22-27	25
Composite	23-29	26

SAT Reasoning Test:

45% took the SAT (2400 scale)

	<u>Middle 50%</u>	<u>Mean</u>
Critical Reading	540-660	600
Math	500-640	580
Writing	550-680	610
Combined	1590-1960	1780

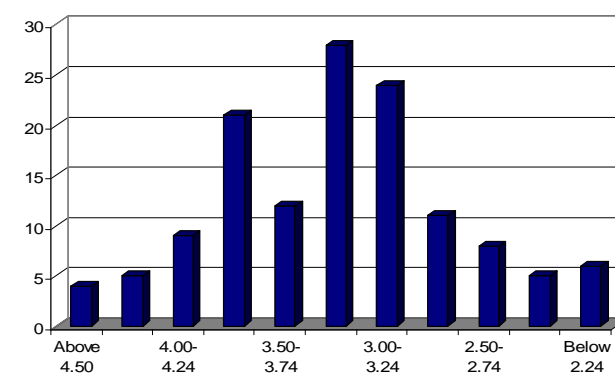
SAT Subject Tests:

15% took at least one SAT subject test

Academic Recognition:

- 1 Presidential Scholar
- 5 National Merit Finalists
- 6 National Merit Commended
- 1 National Achievement Scholar

Sixth Semester Grade Distribution



Class of 2009

GRADING & RANKING:

GPA is calculated with semester grades and academic subjects only. **St. Teresa's Academy does not rank its students.** Extra weight is given to grades for Honors/AP/dual enrollment courses. First Honors = 3.7 and higher GPA, Second Honors = 3.3-3.69 GPA.

St. Teresa's Academy grading scale:

A+	=	98-100	C-	=	77-78
A	=	95-97	D+	=	75-76
A-	=	93-94	D	=	72-74
B+	=	90-92	D-	=	70-71
B	=	87-89	F	=	69/lower
B-	=	85-86	I	=	Incomplete
C+	=	82-84	CR	=	Credit
C	=	79-81	NC	=	No Credit

St. Teresa's Academy is a member of the National Association for College Admission Counseling, as well as its Missouri and Great Plains affiliates, and fully endorses the *Statement of Principles of Good Practice* as adopted by NACAC. All information is being sent to the admissions office/scholarship coordinator on the condition that it is not released to any other party without the consent of the student or her parents. **Faculty and counselor statements are not shared with students or parents.**

CLASS OF 2008
Acceptances

American University
Arizona State University
Auburn University
Augsburg College
Avila University
Baker University
Bard College
Beloit College
Benedictine College
Boston College
Central Methodist University
Clemson University
Colorado School of Mines
Colorado State University
College of Holy Cross
College of Wooster
Columbia College
Concordia University
Cornell College
Creighton University
Dartmouth College
Davidson College
Denison University
DePaul University
DePauw University
Dominican University CA
Drake University
Drury University
Duke University
Eckerd College
Fairfield University
Fontbonne University
Fordham University
Goucher College
Grinnell College
Gustavus Adolphus College
Hampton University
Hendrix College
Iowa State University
Johnson County Community College
Kalamazoo College
Kansas State University

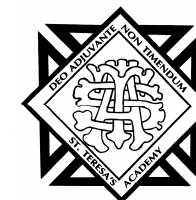
Knox College
Lehigh University
Lesley University
Lewis & Clark College
Lewis University
Loras College
Loyola College in Maryland
Loyola University Chicago
Loyola University New Orleans
Marquette University
Maryville University
Miami University of Ohio
Missouri Southern State University
Missouri State University
Missouri University of Science & Technology
Missouri Western State University
Northern Arizona University
Northwest Missouri State University
Northwestern University
Oklahoma City University
Penn Valley Community College
Pittsburg State University
Providence College
Purdue University
Regis University
Rhodes College
Rockhurst University
Rocky Mountain College of Art & Design
Saint Louis University
Saint Olaf College
Santa Clara University
Savannah College of Art & Design
Seton Hall University
Simpson College
Spring Hill College
Suffolk University
Syracuse University
Texas Christian University
Thomas Aquinas College
Trinity University
Truman State University
Tufts University
Tulane University
University of Arizona
University of Arkansas

University of Central Missouri
University of Chicago
University of Colorado at Boulder
University of Dayton
University of Denver
University of Evansville
University of Illinois Urbana/Champaign
University of Indianapolis
University of Kansas
University of Massachusetts Boston
University of Miami
University of Minnesota Twin Cities
University of Missouri Columbia
University of Missouri Kansas City
University of Missouri Kansas City
Six-Year Medical Program
University of Nebraska at Omaha
University of Nevada Las Vegas
University of North Carolina Chapel Hill
University of Notre Dame
University of Portland
University of Rochester
University of Saint Thomas MN
University of Saint Thomas TX
University of San Diego
University of South Carolina
University of Texas Austin
University of the Pacific
University of Tulsa
University of Wisconsin Madison
Valparaiso University
Vanderbilt University
Vassar College
Villanova University
Warren Wilson College
Washington University of Saint Louis
William Jewell College
William Woods University
Xavier University

College Counseling Department
www.stteresasacademy.org/academics/collegecounseling

ST. TERESA'S ACADEMY

**5600 Main Street
Kansas City, MO 64113-1298
816.501.0011
FAX 816.523.2452
CEEB/ACT 261700
www.stteresasacademy.org**



***Celebrating 140 Years
Excellence in Education Since 1866***

Administration

***Nan Tiehen Bone, Ed. Spec.
President***

***Nancy Nestor Hand, MA
Principal for Academic Affairs***

***Mary Anne Hoecker, MA
Principal for Student Affairs***

***Debi Hudson, MA
College Counselor
dhudson@stteresasacademy.org
816.501.0034***

***Holly Bentley, BS
College Counseling Assistant
hbentley@stteresasacademy.org
816.501.0351***

2008 – 2009